

#6 of Top Military Sector
Architecture Firms

#9 of Top Government
Buildings Architecture Firms

#11 of Top Giants 200
Government Section

Building Design+Construction Rankings



69 Offices
Nationwide



1,400+
Professionals

Architecture

BUILDER

Civil Engineering

Commissioning

Construction Management

Electrical Engineering

Fire Protection Engineering

Interior Design

Mechanical Engineering

RCDD/Communications Engineering

Structural Engineering

Sustainability Consulting

Since 1941, RS&H has set the standard for evolving to meet the ever-changing architecture and engineering needs of clients. We broke away from the status quo of the time and developed a reputation for building teams uniquely suited to support war efforts.

The spirit that fueled our beginning carries on today as we integrate new areas of expertise and enhanced technology to deliver the exceptional quality building and infrastructure services that are the signature of RS&H. Today, we are bolstering U.S. national security through our designs on CONUS and OCONUS installations, contracted through traditional design contracts, Indefinite Delivery/Indefinite Quantity Contracts, and Design-Build partnerships.

Alongside our team of trusted partners and small businesses we are supporting:

- Air Force Civil Engineer Center
- Defense Commissary Agency
- Department of Energy
- Department of Veteran's Affairs
- General Services Administration
- Minnesota Air National Guard
- NASA
- NAVFAC Southeast
- NAFVAC Mid-Atlantic
- NAVSEA
- USACE Albuquerque District
- USCAE Japan District
- USACE Louisville District
- USACE Mobile District
- USACE New York District
- USACE Norfolk District
- USACE Savannah District
- US Army and Engineering Support Center, Huntsville

For career and teaming opportunities, contact



Melissa Zagame

Federal Marketing + Business
Development

(757) 985-4506
Melissa.ZagameWaepler@rsandh.com



Steve Moore

Federal Strategy

(321) 454-6107
Steven.Moore@rsandh.com



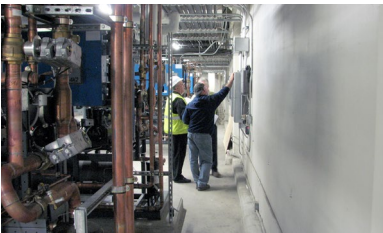
Three New F-22 Operational and Training Facilities Design, Joint Base Langley-Eustis, VA (AFCEC and USACE Norfolk) In support of the beddown and relocation of the 43rd Fighter Squadron, which is the Formal Training Unit for the F-22 fighter aircraft, RS&H led the design and construction phase services for the three new facilities: a \$75M four-bay, high-bay Low Observable Component Repair Facility, a \$52M eight-bay Training Support Squadron Facility, and a \$55M six-bay, high-bay Consolidated Operations and Maintenance Hangar.



Hurricane Michael Recovery Zone 6 Airfield Drainage Design-Build RFP, Tyndall AFB, FL (AFCEC and USACE Mobile) RS&H was selected to lead the development of the design-build RFP for Zone 6 (Airfield Drainage) portion rebuild after Hurricane Michael significantly damaged the base. RS&H provided comprehensive design services to enable the airfield to be fully operational within 72 hours of a major storm event and was the Engineer of Record for the stormwater management facilities.



Ship Handling & Combat Training Facility Design at Combined Fleet Activities Yokosuka, Japan (USACE Japan District) RS&H is leading the design of a new \$50M three-story, MILCON-funded facility that will house Integrated Navigation, Seamanship, and Ship Handling Trainers, a Combined Integrated Air & Missile Defense and Antisubmarine Warfare Trainer, Radar Navigation Trainer, Multi-Purpose Reconfigurable Training System, as well as support areas.



BUILDER Assessments and Development of SMS Inventory and Assessment Guide, Worldwide (Defense Commissary Agency) In addition to providing BUILDER assessments at DeCA facilities on CONUS and OCONUS installations, RS&H published the DeCA BUILDER SMS Inventory and Assessment Guide that refines the Army BUILDERTM SMS Inventory and Assessment Guide to meet DeCA's specific components and systems.



Memorial Amphitheatre Historical Preservation, Arlington National Cemetery, VA (USACE Norfolk District) In preparation for the 100th anniversary of the Tomb of the Unknowns' dedication, RS&H provided field investigations and multi-discipline design services that detailed the areas throughout the Amphitheater, Reception Hall and the plaza that surrounds the Tomb of the Unknowns in order to identify the areas that need to be cleaned, repointed, preserved and to incorporate accessibility improvements and accommodations.



Asteroid Sample Curation Laboratory Facility Design, NASA Johnson Space Center, TX To prepare for the return of the OSIRIS-REx and Hayabusa 2 spacecrafts, the RS&H team provided multi-discipline design services to convert an existing two-story office building into laboratory space to contain the new Asteroid Sample and Advanced Curation laboratories.



Ascension Island Runway Reconstruction Title II services, RAF Ascension Island (AFCEC) RS&H is leading the \$168M construction oversight and inspection services for this 10,000-LF runway reconstruction.